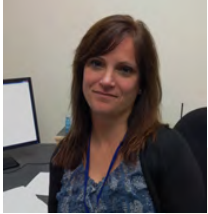


# Kaufman Child Care Centre

## Back to Home

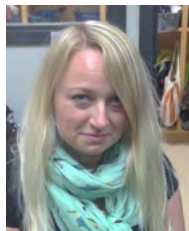
### Meet the Management



**Director of Child Care Services**  
**Eleonora Caporalini – Early Childhood Education III**  
**(specialization in Program Management)**

Eleonora has over 14 years of experience working with children at many levels and in different settings. She was an elementary teacher in Argentina where she co-ordinated the Spanish department. Since migrating to Canada, she has worked in child care settings in many capacities, including inclusion support educator, team leader, assistant director, director of the child care centre, child care coordinator for the Manitoba Government and currently as Director of Child Care Services at the Rady JCC since 2013.

Her current role includes overseeing the child care centre in all the areas, including administration, communication with parents, human resources and mentoring and training the educators in child care trends and philosophy. She went to Israel in 2014 with a select group of Directors from North America as part of Sheva Framework training, and is also facilitating the planning and implementation of a second Rady JCC Learning Centre location for 48 preschool children.



**Assistant Director of Kaufman Child Care Centre**  
**Joanna Young – Early Childhood Educator II**

Joanna received her ECE II in 1994 from Red River College. She began her career in early childhood education at the Aleph-Bet Child Life Enrichment Program over 20 years ago. She has been working at the Rady JCC for over 9 years as a room supervisor, inclusion support worker and now assistant director since 2012.

As assistant director, Joanna helps in hiring exceptional educators to work with our team, mentoring and training them, and evaluating them on an ongoing basis. Joanna is also certified as a Red Cross first aid instructor and trains all our educators in first aid/CPR as required. Joanna's strengths are communicating with parents, fostering strong relationships and trust with our families.

#### **Program Coordinator Manager of Kaufman Child Care**



**Shirly Pelich – Early Childhood Education III (specialization in Special Needs)**

Shirly has over 25 years' experience working with children. She has a Bachelor Degree as an Education Psychologist from Argentina. She got her start in her native Argentina working with children of different needs and alterations in development. Since coming to Canada, she has been working in child care settings as an inclusion support educator, team leader and now program coordinator since 2013. Her role at the Rady JCC includes the coordination, planning and implementation of Jewish programming and the Intergenerational Project. She coaches and trains educators in ITERS and ECERS-R rating scales. Due to her hard work, the centre received one of the highest scores in the province. She also organizes the inclusion support program that helps families find resources and support to meet their child's needs.

# Kaufman Child Care Centre

## Back to Home

### **Working as a Team**

The management team has been receiving Sheva training on an ongoing basis since 2013. The Sheva framework implementation is a complex process that involves different steps. A management team with a deep understanding of the core elements of the framework is essential, and then team leaders are trained through workshops, literature, and reflection on their practice. We are currently providing hands-on workshops for the early childhood educators in each program.

This year, Joanna will be participating in the CATCH training for childrens' health and fitness. Eleonora and Shirly will be going to the annual JCC conference early next year to continue their training in Sheva and all its core elements.

